



May 2018

Budget Considerations for Your Journey to Excellence

Adapted from *Feel the Pull: Creating a Culture of Nursing Excellence*



When it comes to the development of a "Magnet®" budget careful consideration should be given to the full spectrum of the journey and not just to the costs associated with application and site visit. In addition, costs should be included in the initial development of the annual budget, not just "added costs" incorporated into the already developed budget. The journey is a multi-year journey, so costs will be spread over several budget years. Also, many if not most, of the costs will remain after an organization reaches its excellence destination so that will also need strong advocacy and consideration.

[Organizations often underestimate the cost - click to view budget considerations.](#)

Creative Nursing: Special Anniversary Issue **Happy Nurses Week!**

This *Special Anniversary Issue* of *Creative Nursing* celebrates our 10 year collaboration with Springer Publishing to bring innovative thinking and creative solutions to the rapidly changing world of health care. Curated by Editor, Marty Lewis-Hunstiger in this issue you will enjoy submissions from Tim Porter-O'Grady, Jean Watson, Marcus Engel, Marie Manthey and many others. Despite its name, *Creative Nursing* has an interprofessional focus. Enjoy! Happy nurses week.



[View your complimentary digital version of Creative Nursing.](#)

WEBINAR: Start Strong: The Top Four Things the Best Leaders Do in a New Role

Part 1-Start Strong: Tools to Build Trust and Open Communication

Wednesday, May 17th, 2018, 12pm CT with Donna Wright and Susan Wessel

Start strong with a positive first impression. In this webinar, you will gain clarity and focus on the current state of your new department as well as learn how to build a shared purpose and foster your department's capacity to thrive. By participating in this webinar, you will:

- Gain practical tools to carefully design your staff meetings
- Set clear, mutual expectations with your immediate supervisor
- Design individual meetings with staff which build trust and strengthen caring relationships

[Register here.](#)

FREE WEBINAR: Strategic Planning for Your Journey to Excellence

Friday, June 29, 2018 - 12:00 pm CT with Gen Guanci

Organizations often declare they are on a "journey to excellence" yet many have not taken the time to plan that journey. Without a well thought out plan, you could end up wasting valuable resources as well as not arrive where you had hoped to go. The journey to excellence is a multi-year journey with many moving parts as well as major milestones. Join Gen Guanci as she discusses the keys to crafting a realistic and operational strategic plan for your journey to excellence (AKA Magnet®).

[Register here.](#)

Client Success!

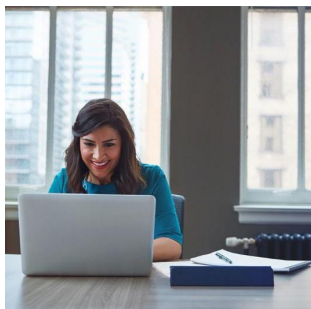
Join us in celebrating the success of three of our clients, all receiving their first redesignation.

- **St Vincent's Medical Center - Bridgeport, CT**
- **Ohio State University Comprehensive Cancer Center - Arthur G. James Cancer Hospital and Richard J. Solove Research Institute (The James) - Columbus, OH**
- **Exeter Hospital - Exeter, NH**



Even though they were redesignating, both St Vincent's and Exeter had new MPDs who had never been through the document creation or submission process before. In addition, The James and Exeter Hospital both submitted documents that the appraisers felt warranted they move directly to site visits. **We continue to be humbled by the opportunity to partner with these successful organizations.**

Excellence Exchange Corner [\(Send us your questions.\)](#)



Q: Does the interim reporting process in the 2019 Magnet® Manual provide opportunity for explanations of trends and interventions applied at the unit level for indicators that don't meet the standard?

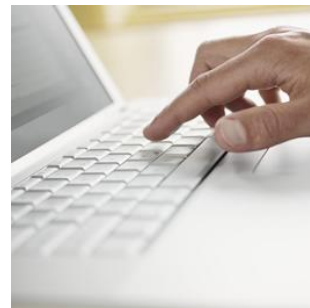
Q: After one of our recent webinars on The Evidence for Excellence, this question was posed: What are some of the most difficult Sources of Evidence (SoE) to provide the evidence needed to meet the 2019 requirement?

[For the answers click here.](#)

Turning Data Collection Around with Ease

We are proud to introduce a solution that addresses multiple areas of labor intensive work for organizations on a Magnet® or any other journey to excellence. Our innovative data-driven platform is customizable to each organization, and has particular value for organizations seeking Magnet® recognition because it supports and simplifies several ANCC® requirements including:

- Demographic Data Collection Tool® (DDCT®)
- Peer Feedback and Self-Appraisal
- Documentation of Professional Development



[Make reporting your journey activities more effective and streamlined.](#)

Upcoming Events

Shared Governance Strategies That Work

June 7-8, 2018 - Minneapolis, MN

[Event details and registration.](#)

Crafting Your Magnet® Document Based Upon the 2019 Manual

June 20-21, 2018 - San Diego, CA

[Event details and registration.](#)

Getting Clear on the 2019 Magnet® Data Requirements

June 22, 2018 - San Diego, CA

[Event details and registration.](#)

Relationship Based Care Leader Practicum

August 6-10, 2018 - Gettysburg, PA

[Event details and registration.](#)



Creative Health Care Management | 800.728.7766 | CHCM.com

MAGNET®, Magnet Recognition Program®, ANCC®, Magnet®, and the Magnet Journey® are registered trademarks of the American Nurses Credentialing Center. The products and services of Creative Health Care Management are neither sponsored nor endorsed by ANCC. All Rights Reserved.

STAY CONNECTED:

